



# GAT MONTHLY MEMBERSHIP PROGRESS REPORT

Results as of: 4/30/2024

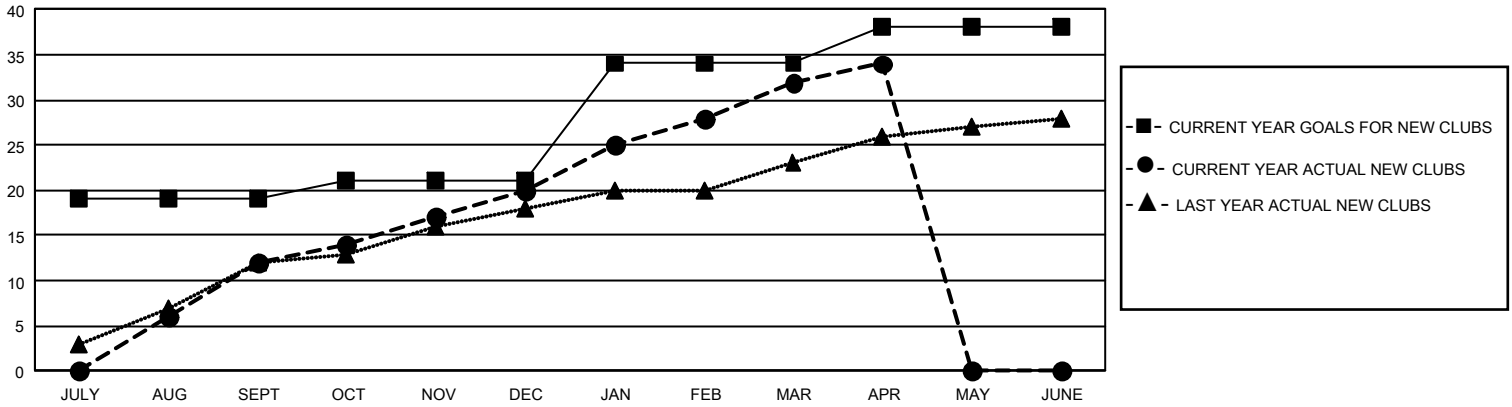
## GMT Constitutional Area 5 - K, Group K

REPORT DOES NOT INCLUDE CLUBS IN UNDISTRICTED AREAS.

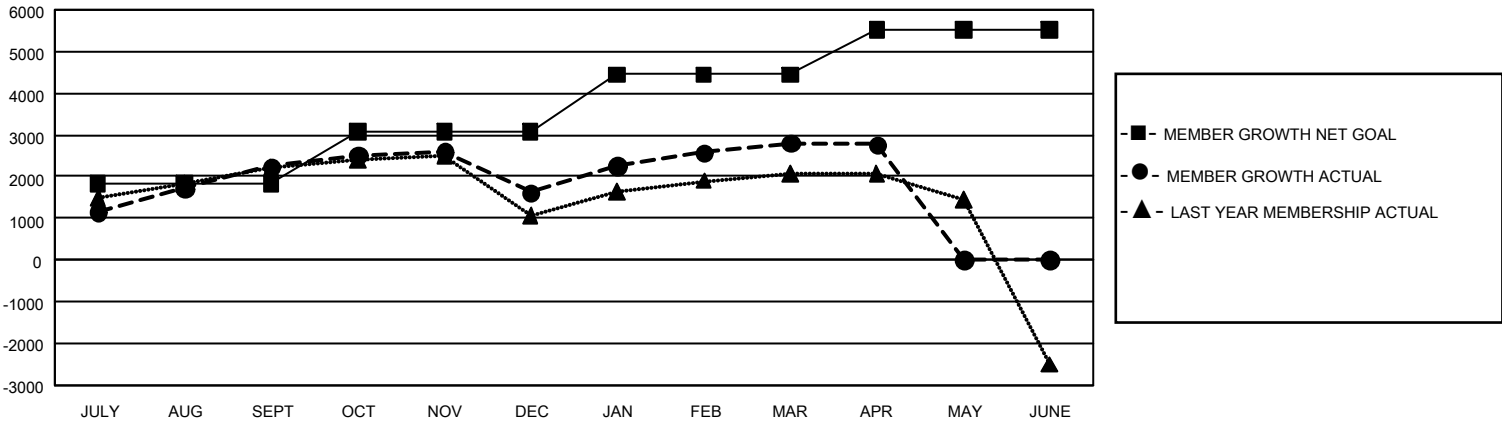
Clubs			
RESULTS FOR 2023-2024			
QUARTER	NEW CLUB GOAL	NEW CLUBS	DROPPED CLUBS
JULY/AUG/SEPT	57	12	9
OCT/NOV/DEC	6	8	14
JAN/FEB/MAR	39	12	2
APR/MAY/JUNE	12	2	5

Members			
RESULTS FOR 2023-2024			
QUARTER	MEMBER GROWTH NET GOAL	MEMBER GROWTH ACTUAL	DROPPED MEMBERS ACTUAL (including transfers)
JULY/AUG/SEPT	1828	4,741	2,248
OCT/NOV/DEC	1256	2,235	2,739
JAN/FEB/MAR	1363	2,570	1,251
APR/MAY/JUNE	1085	409	419

GOALS AND ACTUAL NEW CLUBS CUMULATIVE



GOALS AND ACTUAL MEMBERS CUMULATIVE



DROPPED CLUBS: 28	1,603 CLUBS OF 2,045 ADDED 1 OR MORE NEW MEMBERS	<u>GENDER DISTRIBUTION</u>	
		MALE	53,719 (73.47%)
<u>DROPPED MEMBERS</u>		FEMALE	19,391 (26.52%)
DECEASED	209	NON BINARY	0 (0.00%)
CLUB CANCELLED	221	PREFER NOT TO ANSWER	7 (0.01%)
OTHER	6,227	TOTAL FAMILY UNIT MEMBERS	4,026
<b>TOTAL</b>	<b>6,657</b>	FAMILY MEMBERS PAYING HALF DUES	2,318

[CLICK HERE FOR CUMULATIVE MEMBERSHIP DATA](#)